

# BL.366 - BL.368

ELESA original design

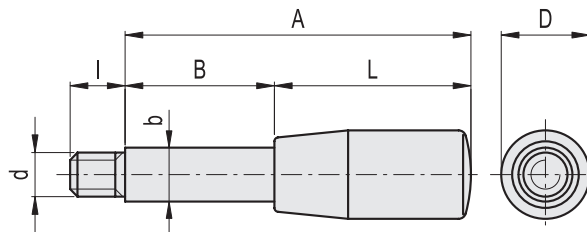
## Lever arms



### • Standard executions

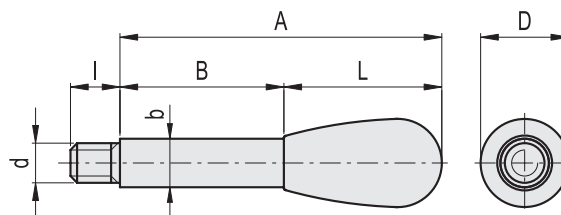
Black colour, fixed to the arm, not removable.

- **BL.366:** handle type I.280 phenolic based (PF) Duroplast. Matte chrome-plated steel arm.
- **BL.368:** handle type I.222 phenolic based (PF) Duroplast. Matte chrome-plated steel arm.



### BL.366

Code	Description	A	D	L	d <sub>6g</sub>	B	b	l	⚖
3401	BL.366/8x65	65	14	28	M6	37	8	8	22
3402	BL.366/8x75	75	14	28	M6	47	8	8	25
3404	BL.366/8x95	95	14	28	M6	67	8	8	33
3500	BL.366/10x75	75	18	40	M8	35	10	9	40
3501	BL.366/10x65	65	18	40	M8	25	10	9	35
3502	BL.366/10x85	85	21	50	M8	35	10	9	48
3503	BL.366/10x95	95	21	50	M8	45	10	9	55
3504	BL.366/10x125	125	21	50	M8	75	10	9	73
3505	BL.366/10x155	155	21	50	M8	105	10	11	92
3601	BL.366/12x102	102	23	65	M10	37	12	14	80
3602	BL.366/12x118	118	23	65	M10	53	12	14	95
3603	BL.366/12x165	165	23	65	M10	100	12	14	138
3604	BL.366/12x203	203	23	65	M10	138	12	14	165
3701	BL.366/14x125	125	26	80	M12	45	14	15	130
3702	BL.366/14x160	160	26	80	M12	80	14	15	165
3703	BL.366/14x200	200	26	80	M12	120	14	15	220
3801	BL.366/16x105	105	28	90	M14	15	16	15	120
3802	BL.366/16x143	143	28	90	M14	53	16	15	178
3803	BL.366/16x164	164	28	90	M14	74	16	15	210
3804	BL.366/16x190	190	28	90	M14	100	16	15	252



### BL.368

Code	Description	A	D	L	d <sub>6g</sub>	B	b	l	⚖
4001	BL.368/10x57	57	20	32	M8	25	10	9	33
4002	BL.368/10x67	67	20	32	M8	35	10	9	39
4003	BL.368/10x77	77	20	32	M8	45	10	9	45
4004	BL.368/10x107	107	20	32	M8	75	10	9	64
4005	BL.368/10x137	137	20	32	M8	105	10	11	83
4101	BL.368/12x79	79	26	42	M10	37	12	14	68
4102	BL.368/12x95	95	26	42	M10	53	12	14	82
4103	BL.368/12x142	142	26	42	M10	100	12	14	125
4104	BL.368/12x180	180	26	42	M10	138	12	14	157
4201	BL.368/14x100	100	33	55	M12	45	14	15	124
4202	BL.368/14x135	135	33	55	M12	80	14	15	160
4203	BL.368/14x175	175	33	55	M12	120	14	15	220
4301	BL.368/16x70	70	33	55	M14	15	16	15	100
4302	BL.368/16x108	108	33	55	M14	53	16	15	158
4303	BL.368/16x129	129	33	55	M14	74	16	15	190
4304	BL.368/16x155	155	33	55	M14	100	16	15	232